

# SX-ND-4350WAN Wireless Network Display Adapter HDMI




## Wireless Interactive Display Adapter and Access Point

### Overview:

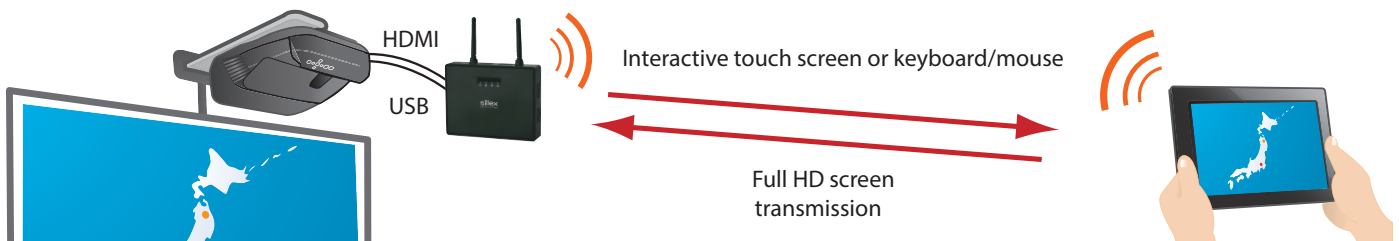
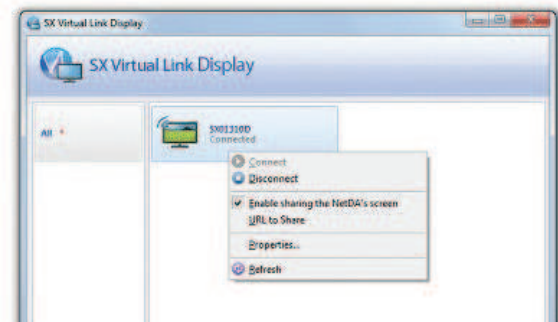
SX-ND-4350WAN is a wireless interactive display adapter, and also functions as a wireless access point. The product connects to the network and the display in a presentation or classroom environment:

- **Interactive image transmission.**
  - Projects screen of a Windows® tablet or notebook computer to an interactive board, short-focus projector or large format touch displays over a wireless connection.
  - Wirelessly enable the touch operation of an interactive display, Bi-directional communication supported.
  - Dual Band 802.11n, up to 300 Mbit/s.
- **Wireless LAN access point**  
No need for additional wireless infrastructure expense.

- **Support for Full HD resolution**  
(1920 x 1080) at up to 24 frames per second permits the display of high picture quality. 
- **“NetDA Manager”, a simple and user-friendly utility**  
This software allows you to search for NetDA devices, connect and disconnect with monitors and touch input, and allows you to query the connection status.
- **Screen Sharing to any Device**  
The software has a feature that allows you to easily share the screen being shown on the display to any device that has a web browser including tablet devices and smartphones.

### Main Features:

- **Robust and Quality Wireless Operation**  
Immediate response to touch input and video, without visible latency.
- **Bidirectional data transfer with various USB devices**  
Silex USB Virtual Link Technology™ enables various input devices such as touch panels or USB devices to be remotely controlled from across the network by the computer. Remote control of PC via USB mouse and keyboard possible.



#### Display

- Large screen TV
- Interactive Board
- Super short-focus projector

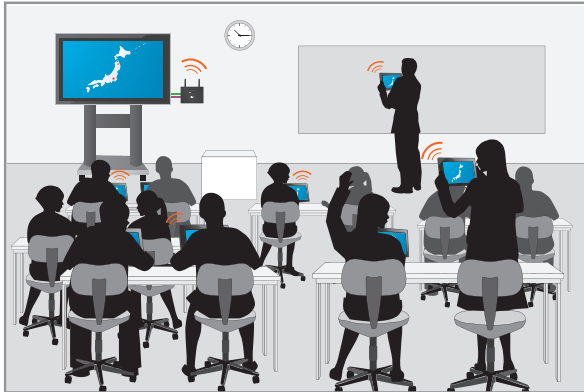
Windows tablet

# SX-ND-4350WAN Wireless Network Display Adapter HDMI

## Application Options:

case 1

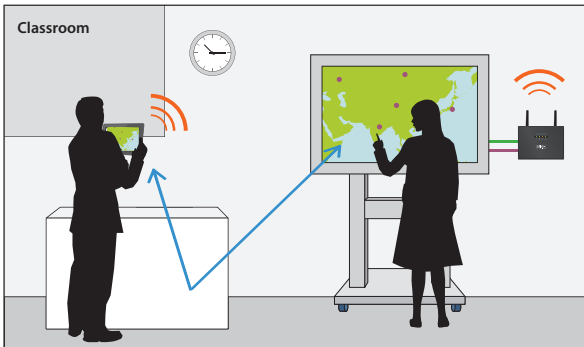
Training or presentation



A wireless connection instead of cables next to the teacher's podium allows the display to be moved around the room without restriction, making it easier to put away and to set it up.

case 2

At school



Wireless interactive collaboration between teacher and student including touch screen and display without visible latency.

— HDMI — USB

### Accessory options for the network display adapter

Mounting bracket



• VESA Compliant Mounting Bracket  
Part Number: E1273

OEM circuit boards for integration into a display and SDK solutions are also available. Please contact us for details.

## Technical Data:

Wired LAN	Product Name	SX-ND-4350WAN
	Article number	E1286
	Interface	RJ-45 1 port (supported Auto MDI/MDI-X)
	Standard	Conforming to IEEE802.3 10BASE-T/100BASE-TX/1000BASE-T
Wireless LAN	Security	MAC address filter
	Interface	IEEE802.11a/b/g/n 2T×2R (theoretical value 300Mbps)
	Transmission Method	IEEE802.11a 5GHz (modulation method: OFDM) IEEE802.11b 2.4GHz (modulation method: DS-SS) IEEE802.11g 2.4GHz (modulation method: OFDM) IEEE802.11n (modulation method: OFDM) – MIMO (Multiple Input Multiple Output) – A-MPDU and A-MSDU of Aggregation function – HT20/HT40 mode (high-throughput mode)
	Radio Wave Output Setting	20 stages can be set at an interval of 5% from 5% to 100%
	Bandwidth Control	QoS
	Maximum Clients	56 wireless clients (AP mode)
	MultiSSID	2
	Security (authentication method)	Open, Shared, WPA-PSK, WPA2-PSK, WPA/WPA2-PSK (MIX) mode, 802.1x, WPA-Enterprise, WPA2-Enterprise, WPA/WPA2-Enterprise (MIX) mode
	Security (coding method)	AES, TKIP, AUTO, WEP (64/128bit)
	Security (others)	Stealth SSID, Privacy separator, MAC address filter
Image Transmission	Smart Wireless Setting	"Smart wireless setting" for client connection by push button, PIN cord, Supported external registrar
	Interface	HDMI x 1 port
	Display resolution	Maximum resolution: Full HD (1920 x 1080)
USB	Display function	Mirror mode (reproduction)
	Interface	USB2.0 x 2 Port
Other	Supported OS	Windows 7, Windows 8, Windows 8.1
	Supported utility	NetDA Manager 1.8.0 or later
	External dimension	120mm x 155mm x 32mm (excluding antenna)
	Accessories	Main body, AC adaptor, CD-ROM, Setup guide, Rubber feet (4), GPL notification sheet

## Wireless Interactive HDMI Display Adapter



SX-ND-4350WAN

## About silex

Since 2000, silex technology europe GmbH has been a subsidiary of the Japanese company silex technology, Inc. The parent company in Japan has been involved in development and production since 1973. Thus silex technology can look back on more than 40 years of experience and quality work. In addition to the central company headquarters in Kyoto, there are locations in Tokyo, the USA, China and Europe.

Today, the silex group is not only a world market leader in integrated network printing technology, but also a leading supplier of connectivity in the areas of USB, serial and WLAN. Many well-known manufacturers of computer peripherals rely on the technologies of silex technology and use them as OEM suppliers for their own products.

Their product line includes print, USB and serial device servers, as well as modular WLAN solutions. In addition to mature technologies and quality products, the company also offers a complete ranges of services, such as lifetime free support by telephone, email or remote access for all customers.



JQA-QMA2667  
silex technology, Inc.



JQA-EM0813  
silex technology, Inc.  
Design & Manufaktur Center

silex technology is a registered trademark of silex technology, Inc. Other products or trade names are the registered trademarks of their owners. Changes to technical specifications and data may be made with no prior notice. © 2014 silex technology europe GmbH. All rights retained.

## Global marketing and support locations:

**Europe**  
silex technology europe GmbH  
+49-2151-65009-11  
Toll-free hotline in Germany:  
0800-7453938  
www.silexeurope.com  
> contact@silexeurope.com

**Japan**  
silex technology, Inc.  
+81-774-98-3782  
www.silex.jp  
> support@silex.jp

**USA**  
silex technology america, Inc.  
+1-801-747-0656  
Toll-free hotline in USA:  
866-765-8761  
www.silexamerica.com  
> contact@silexamerica.com

**China**  
silex technology beijing, Inc.  
+86-10-8497-1430  
www.silex.com.cn  
> contact@silex.com.cn

**silex**  
technology