

# Wireless Bridge BR-300AN

## with operation log saving function

Wireless solution supporting 802.1x security with a log saving function and integrated device control tool



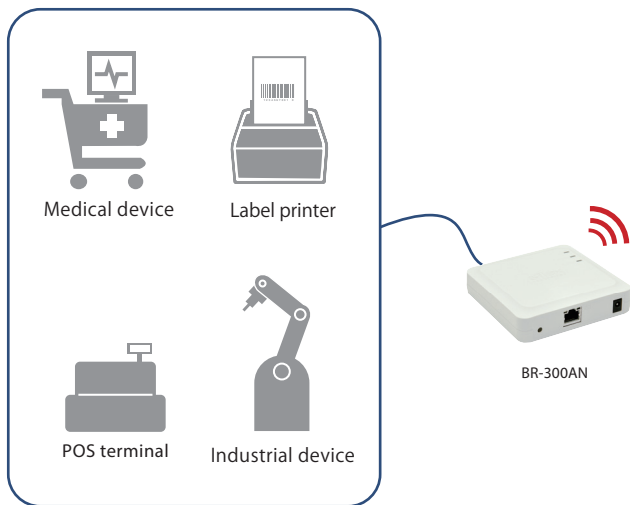
### Overview

The Wireless Bridge BR-300AN is a wireless bridge device which can easily convert a 10/100/1000BASE-T wired LAN device to a wireless LAN device. It supports a wireless LAN communication in the 2.4GHz and 5GHz bands and enables a wired LAN device to join in a wireless LAN environment easily. It also supports enterprise security which allows you to use the Wireless Bridge BR-300AN reliably even in environments such as offices, health care sites and plants, which require security.

### Main Features

#### Device mobilization is realized with wireless connection

The Wireless Bridge BR-300AN enhances the flexibility of devices in logistics, medical and industrial fields because it does not need to lay cables. It will also improve the efficiency of your work with a real-time data communication.



#### Advanced security function

The Wireless Bridge BR-300AN supports security function for wireless LAN environments to eliminate peoples' concerns. It is equipped with reliable wireless LAN security function for your business.

- Open(None/64bit/128bit)
- Shared(64bit/128bit)
- WPA2-PSK(AES)
- WPA/WPA2-PSK Mixed(Auto)
- WPA2-Enterprise(AES)
- WPA/WPA2-Enterprise Mixed(Auto)
- 802.1x (EAP-TLS/EAP-TTLS/PEAP/LEAP/EAP-FAST)

Use the setting of WPA/WPA2-PSK Mixed (Auto), WPA/WPA2-Enterprise Mixed (Auto) when you use WPA-PSK (AES/TKIP) and WPA-Enterprise (AES/TKIP).

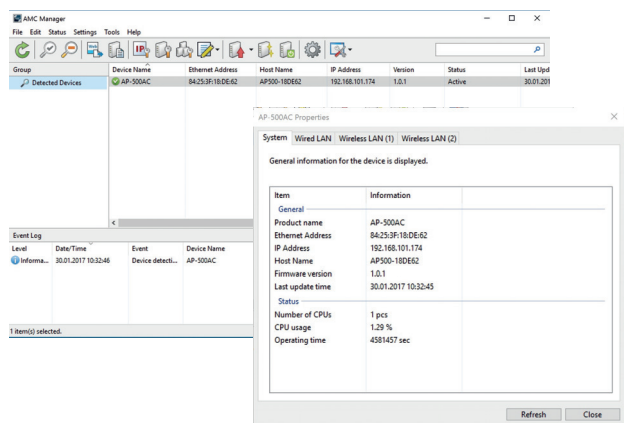
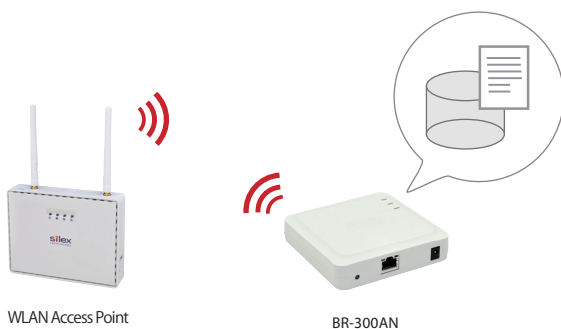
It supports a SSL certificate signed with SHA-2.

#### Integrated device control software

The wireless Bridge BR-300AN is compatible with "AMC Manager<sup>®</sup>," integrated device control software (Optional). With the software, network administrators easily can monitor the status, configure changes, update the firmware, and reboot the device of silex networking products connected to a wired or wireless network remotely and all it once.

#### Operation log saving function

The storage area for log saving in the Wireless Bridge BR-300AN enables you to save operation logs for long periods. It quickly resolves communication interference or degradation due to changes in your wireless environment.



## IEEE 802.11a/b/g/n

The Wireless Bridge BR-300AN conforms to communication standards of IEEE802.11a/n in the 5GHz band, which has less radio wave interference and IEEE 802.11b/g/n in the 2.4 GHz, which penetrates obstacles.

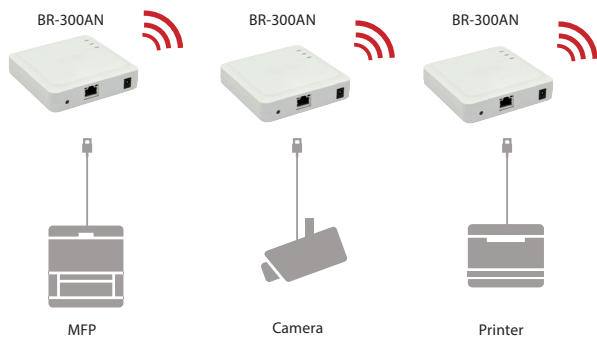
## Gigabit Ethernet

The Wireless Bridge BR-300AN is equipped with a single wired LAN port of 10/100/1000BASE-T (auto-recognition) to connect a wired LAN device.

## Two operation modes

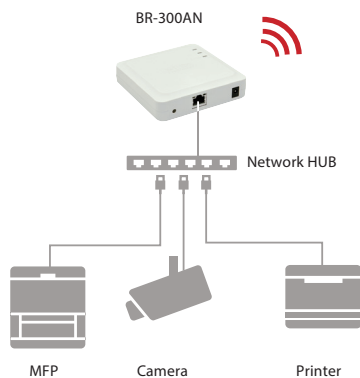
### Single client mode

- Able to connect a device connected to the wired LAN port of the Wireless Bridge BR-300AN using a LAN cable to a wireless LAN.
- Uses the MAC address of the device connected to the wired LAN port for wireless communications (MAC address transparency feature).
- Cut the wireless LAN connection to stop the function when the device connected to the wired LAN port is replaced by another device (security feature).



### Multi-client mode

- Able to connect up to 16 wired LAN devices through a HUB to the wireless LAN.
- Uses the MAC address of the Wireless Bridge BR-300AN for wireless LAN communications



## ※1: Smart wireless setup

The Wireless Bridge BR-300AN allows you to set wireless LAN setting by using a push switch.

It simply connects to an access point supporting WPS (\*1).

\*1: WPS (Wi-Fi Protected Setup) is a trademark of Wi-Fi Alliance.

## Simple to set up and use (patented)

You can access to the setting page of the Wireless Bridge BR-300AN in a simple process without changing the configuration of a computer used for setting. Free from troublesome setting work when you set up the Wireless Bridge BR-300AN.

## Specifications

Model Number	BR-300AN
LAN	
Interface	RJ-45 × 1Port
Standard	10/100/1000BASE-T(auto-recognition)
WLAN	
Standard	IEEE 802.11a/b/g/n 2Tx2R
Security	Open(None/64bit/128bit) Shared(64bit/128bit) WPA2-PSK(AES) WPA/WPA2-PSK Mixed(Auto) WPA2-Enterprise(AES) WPA/WPA2-Enterprise Mixed(Auto) 802.1x (EAP-TLS/EAP-TTLS/PEAP/LEAP/EAP-FAST) ※Use the settings of WPA/WPA2-PSK Mixed (Auto) and WPA/WPA2-Enterprise Mixed (Auto) when WPA-PSK (AES/TKIP) or WPA-Enterprise(AES/TKIP) are used.
Channels	2.4GHz : 1~13ch 5GHz : 36~64ch, 100~140ch
Antenna	Built-in antenna - 2,4- and 5-GHz-Band
Push button	Push button, PIN-Code
Other Interfaces	
Push button	Operation mode switching, default setting and smart wireless
Others	
Storage Conditions	temperature : -10~50°C humidity : 20~90%RF (non-condensing)
Operating Conditions	temperature : 0~40°C humidity : 20~80%RF (non-condensing)
Maximum Power Consumption	5.5W (DC5V 1.1A)
Dimensions	100.0mm x 100.0mm x 25.5mm (the main unit only)
Weights	120g (the main unit only)
Setting	Webbrowser (supports AMC Finder), AMC Manager®
Accessories	Main unit, AC adapter, LAN cable, setup guide, rubber feet, GPL inquiry sheet, warranty card
Certification	VCCI Class-B, FCC Part15 SubPart B Class B, CE EN55022 Class B, CE EN301489-1/-17, Conform to Rohs Directive
Partnumber	E1397



## About silex

Silex Technology builds on more than 40 years of hardware and software connectivity know-how and IP, custom design development experience, and in-house manufacturing capabilities, bringing value to customers with a foundation of technical expertise. With relentless attention to quality, exclusive access to Qualcomm Atheros expertise, and strategic partnerships with leading semiconductor providers, Silex Technology is the global leader in reliable Wi-Fi connectivity for products ranging from a medical device to a document imaging product to a video or digital display.

Besides embedded Wi-Fi components and services for OEM customers, Silex Technology also develops, manufactures and markets Wi-Fi and LAN-connectivity end-products for business and enterprise users, ranging from USB and Serial Device Servers, Wireless Infrastructure Devices to Display Connectivity Solutions.

With Silex Technology, customers get a single vendor that provides hardware and software support from design through manufacturing for successful product after successful product.

silex technology is a registered trademark of silex technology, Inc. Other product names or brands names may be registered trademarks or trademarks of their respective owners. Technical information and specification are subject to change without notice. © silex technology, Inc. All rights reserved.

## Global marketing and support locations:

**Europe**  
silex technology europe GmbH  
+49-2151-65009-10  
Toll-free hotline in Germany:  
0800-7453938  
www.silexeurope.com  
> contact@silexeurope.com

**Japan**  
silex technology, Inc.  
+81-774-98-3782  
www.silex.jp  
> support@silex.jp

**USA**  
silex technology america, Inc.  
+1-801-747-0656  
Toll-free hotline USA:  
866-765-8761  
www.silexamerica.com  
> contact@silexamerica.com

**China**  
silex technology beijing, Inc.  
+86-10-8497-1430  
www.silex.com.cn  
> contact@silex.com.cn